

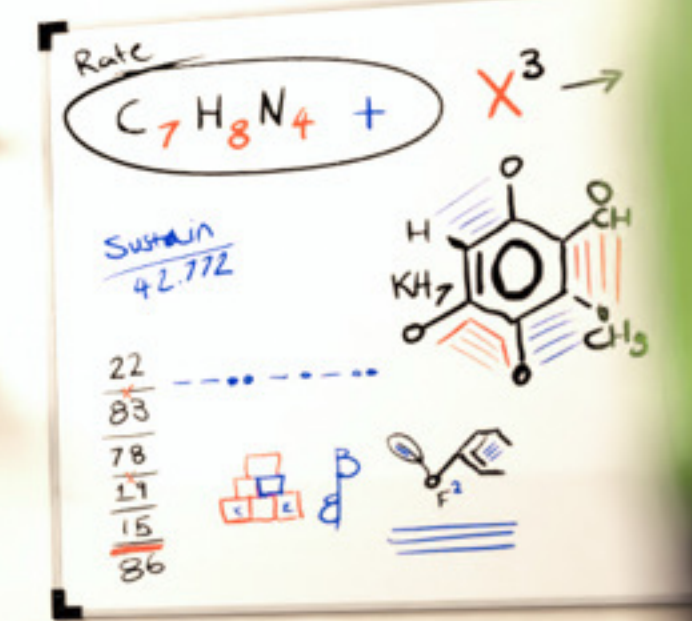
FEMMAXUNIVERSE

PART ONE


# THE INTERU



JUST... EXTRAORDINARY.  
EVERY TIME I LOOK AT IT, IT  
FEELS LIKE IT'S HIDING A  
THOUSAND SECRETS.







MAYA, COULD YOU  
RETRIEVE A SMALL SAMPLE OF  
THE SUBSTANCE FROM STORAGE  
CHAMBER 2? I NEED IT PREPPED  
FOR THE CRYOSTATIC ISOLATION  
BATH OVERNIGHT.

NO MORE  
THAN 2 GRAMS.



A woman with dark hair in a ponytail, wearing a white lab coat over an orange top, is shown in profile, looking towards the left. She has a speech bubble above her head. The background is a blurred indoor setting with green plants on the left.

OH! YES, DR.  
FITZPATRICK. RIGHT  
AWAY!


CRYOSTATIC ISOLATION...  
SO SHE'S TESTING THERMAL  
STABILITY AGAIN? SHE REALLY  
BELIEVES SHE CAN MAKE IT  
PERMANENT...



A woman with dark hair tied back, wearing a white lab coat over an orange top, is looking down at a tablet computer she is holding. She is in a laboratory or office setting with a large, glowing green, textured object on the left and blurred figures in the background. A speech bubble is above her head.

JUST A  
TINY PIECE... CAN'T  
MESS THIS UP.





EASY... EASY...  
THAT SHOULD BE  
ENOUGH.



A woman with long, straight red hair and bangs, wearing round black-rimmed glasses and a white lab coat over a red top. She is looking down and slightly to her right. The background is a blurred laboratory setting with shelves and equipment.

MAYA, REMEMBER - NO MORE  
THAN SPECIFIED. THIS IS ALL WE HAVE.  
EVERY ATOM OF THE SUBSTANCE IS  
IRREPLACEABLE.

YES, DR.



A close-up shot of a woman with dark hair, a nose ring, and a white jacket. She has a frustrated or angry expression on her face. A speech bubble next to her head contains the text "DAMN IT...". The background is blurred, showing green foliage on the left and a bright, out-of-focus interior on the right.

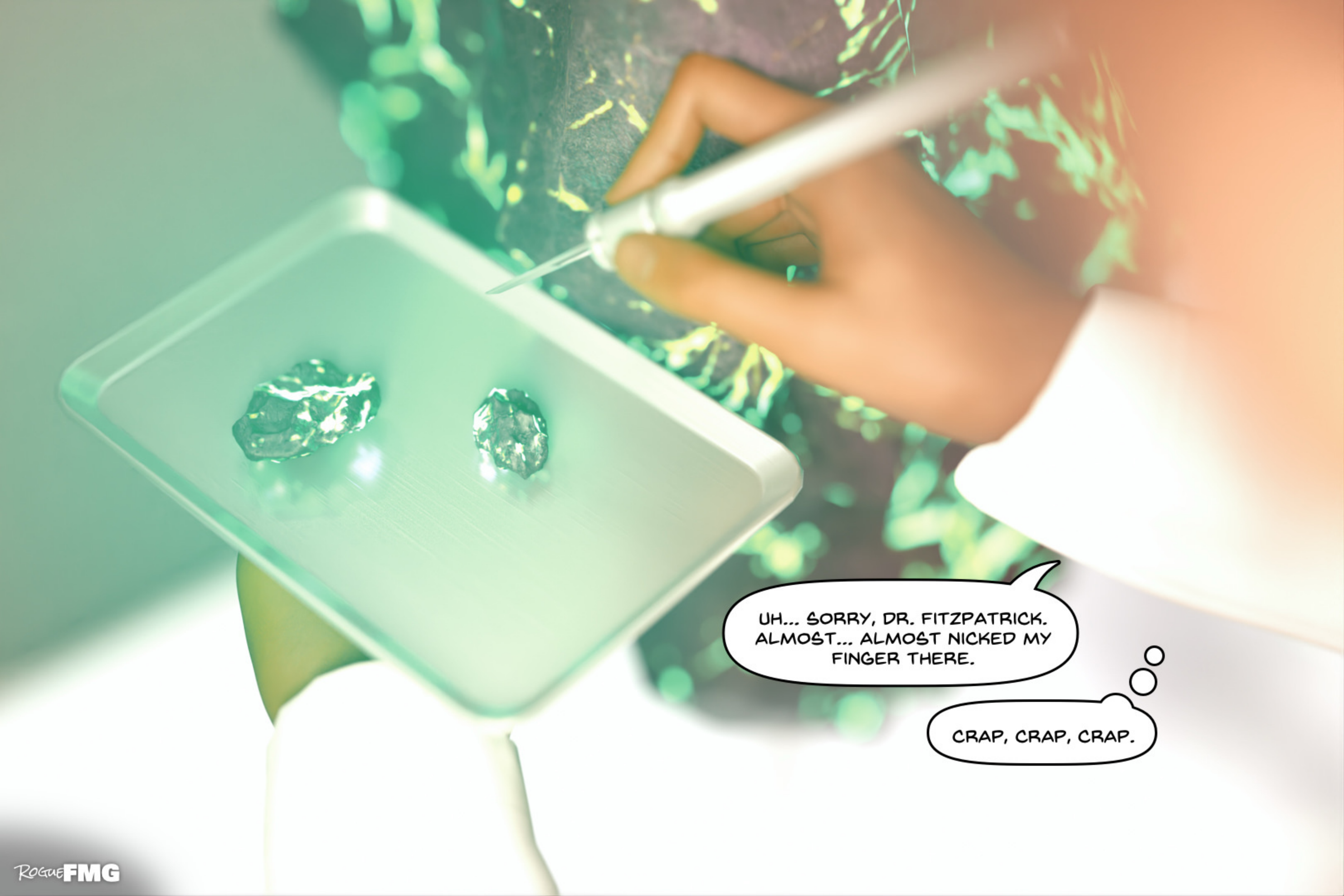
DAMN IT...





PROBLEM?






UH... SORRY, DR. FITZPATRICK.  
ALMOST... ALMOST NICKED MY  
FINGER THERE.

CRAP, CRAP, CRAP.






CAREFUL, MAYA. WE CAN'T  
AFFORD TO WASTE ANYTHING -  
NEITHER THE SUBSTANCE NOR  
YOUR BLOOD. TRY NOT TO FUMBLE  
NEXT TIME.



A woman with dark hair tied back, wearing a white lab coat, stands in a laboratory. She is holding a white tray with several small, colorful pills. She has a nervous expression, looking slightly to the side. The background shows laboratory equipment and glowing green plants.

Y-YES, DR.  
FITZPATRICK. I'LL BE  
MORE CAREFUL

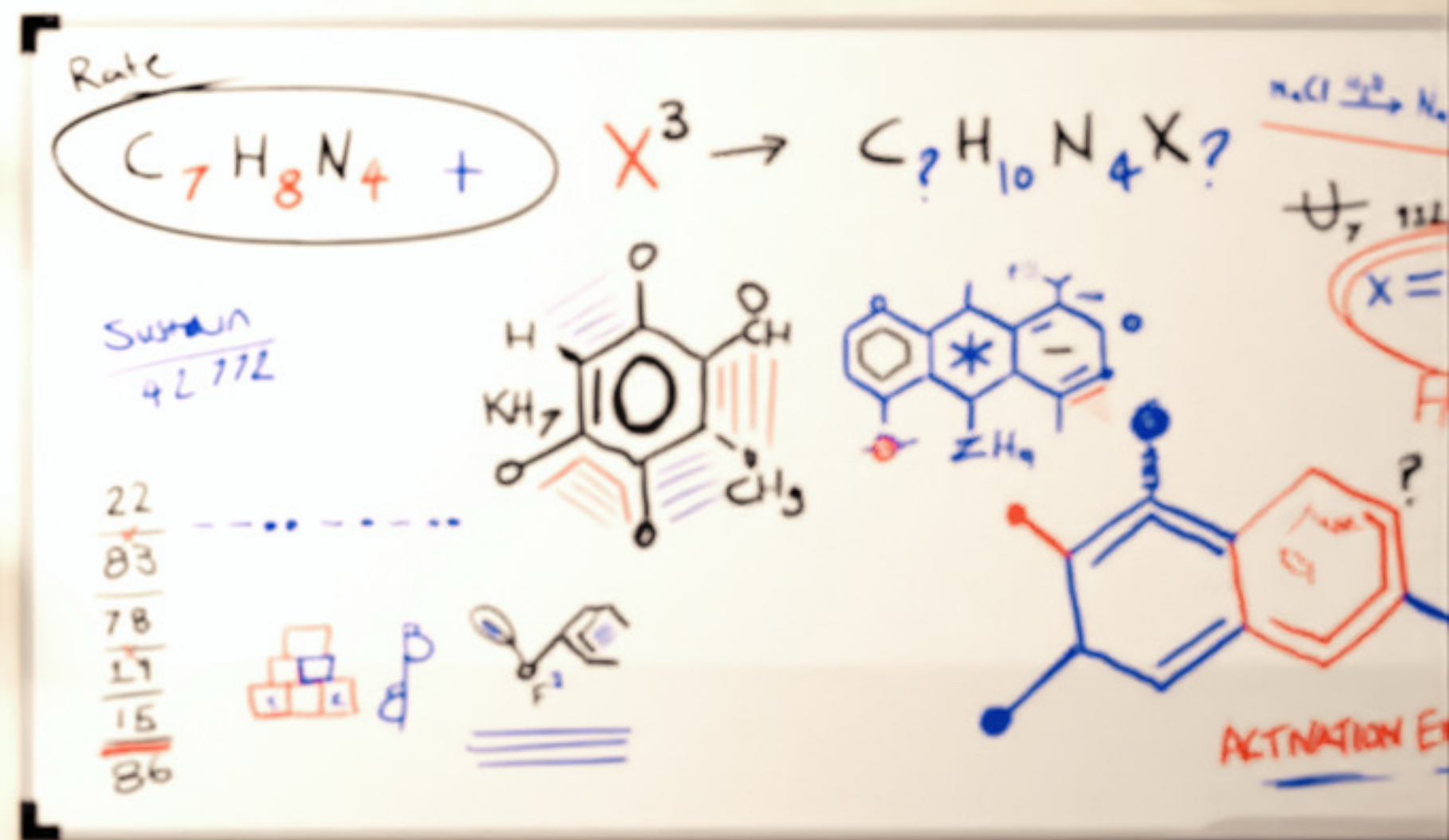


A close-up of a hand holding a large, faceted diamond. The hand is positioned in the center-left of the frame, with the diamond held between the thumb and index finger. The background is a blurred green and white, suggesting an indoor setting with plants. A thought bubble is positioned above the hand, containing text. The right side of the image is a solid orange gradient.

I'LL FIGURE OUT WHAT TO DO  
WITH THIS LATER... I JUST CAN'T  
LET IT GO TO WASTE. I CAN'T  
LOSE THIS INTERNSHIP.



IS THE SAMPLE  
PREPARED, MAYA?






YES, DOCTOR, JUST  
AS YOU SPECIFIED.








GOOD WORK, MAYA.  
KEEP THIS UP AND YOU'LL  
BE AN INVALUABLE ASSET  
TO THE TEAM.





THANK YOU, DR.  
FITZPATRICK. I... I'LL  
KEEP DOING MY BEST.

PLEASE, CALL  
ME AMY

H... SURE, DR. F-  
I MEAN, AMY.



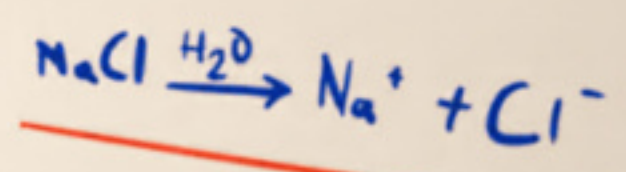
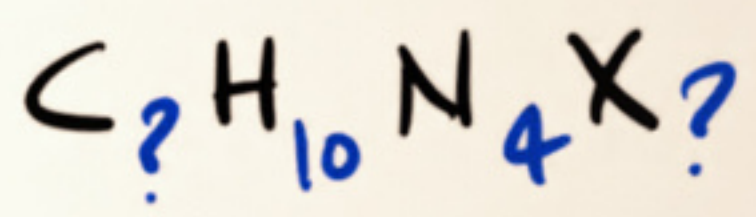
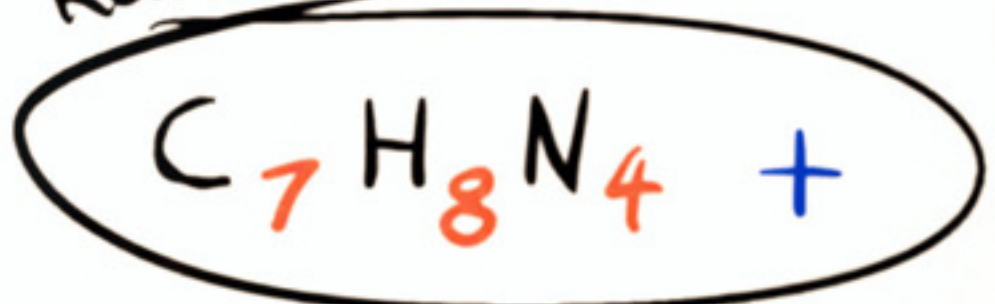


THESE EQUATIONS...  
I'VE NEVER SEEN ANYTHING  
LIKE THEM...

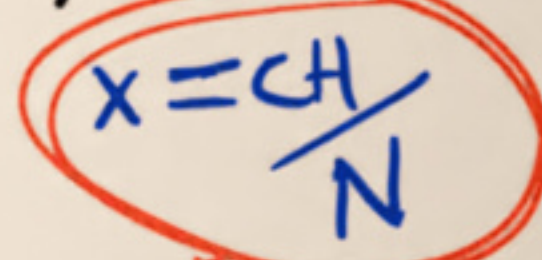
I HAD TO INVENT NEW WAYS OF  
EXPRESSING THE DETAILS OF MATTER.  
CONVENTIONAL NOTATION JUST COULDN'T  
KEEP UP. SO YOU MAY NOT RECOGNISE  
ALL THE SYMBOLS.



Rate

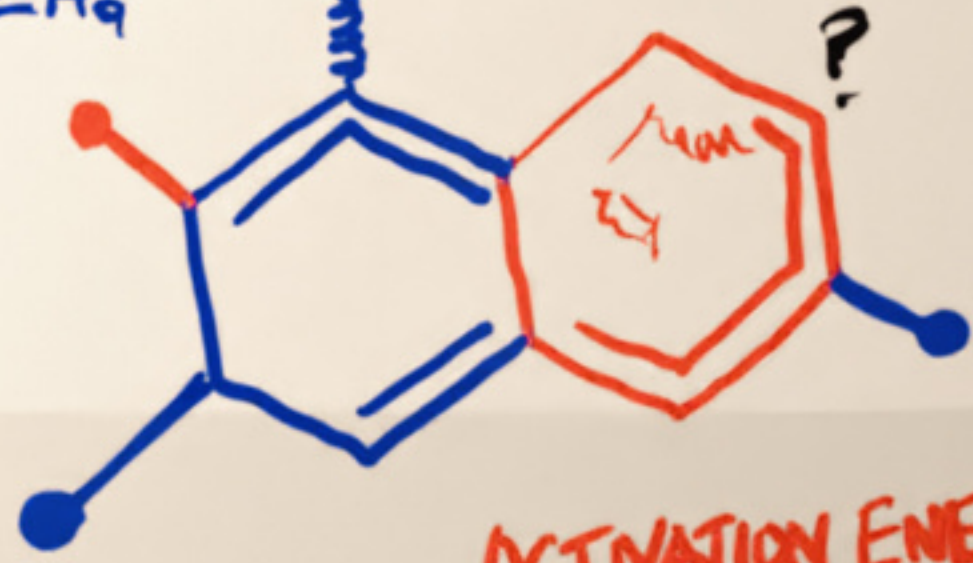
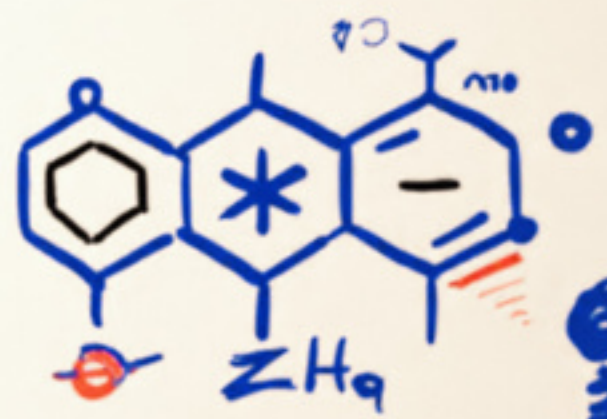
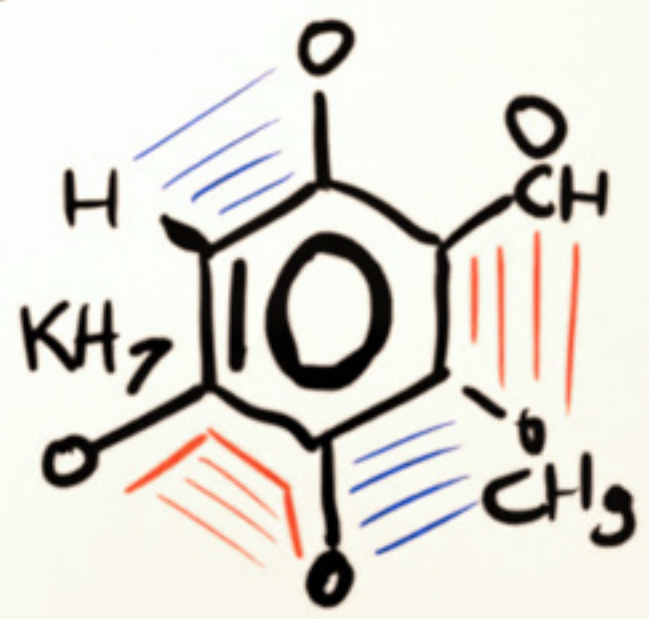


$\psi_7$  93274



FAIL

Sustain  
42.772



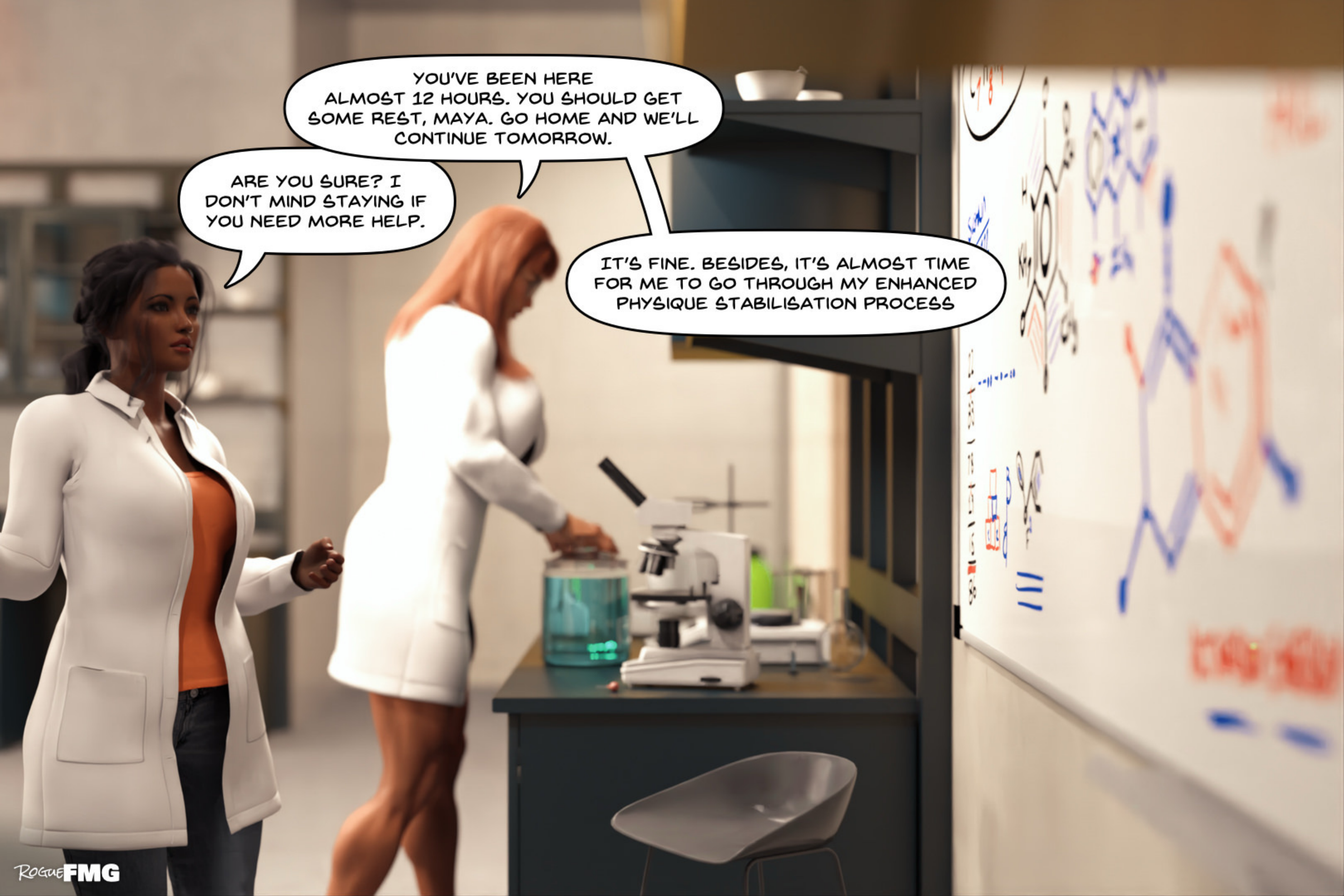
ACTNATION ENERGY?

22  
83  
78  
19  
15  
86



WOW... THE WAY YOU'VE USED IT, IT'S LIKE AN ENTIRELY NEW LANGUAGE. NO WONDER I COULDN'T READ IT.





YOU'VE BEEN HERE  
ALMOST 12 HOURS. YOU SHOULD GET  
SOME REST, MAYA. GO HOME AND WE'LL  
CONTINUE TOMORROW.


ARE YOU SURE? I  
DON'T MIND STAYING IF  
YOU NEED MORE HELP.

IT'S FINE. BESIDES, IT'S ALMOST TIME  
FOR ME TO GO THROUGH MY ENHANCED  
PHYSIQUE STABILISATION PROCESS



ALRIGHT.  
GOODNIGHT, AMY.





NO MATTER THE TIME  
OF THE DAY, THIS PLACE  
FEELS SO... EERIE.

NO WINDOWS,  
NO SUNLIGHT... JUST ENDLESS  
WHITE CORRIDORS. MAKES MY  
SKIN CRAWL.




A scene from a video game featuring two characters in full-body orange hazmat suits, including hoods and masks. The character on the left is holding a clear glass fishbowl containing a single orange and white striped clownfish. The character on the right is gesturing with their gloved hands. In the background, a blue toy airplane sits on a wooden table. The room has a simple, institutional feel with a plain wall and a window.

HER NAME IS  
PATRICIA. I HAD TO  
BRING HER IN. SHE'S  
A POORLY GIRL.

IS... IS THAT A  
FISH, WILL?



A close-up shot of a person wearing a teal protective suit with a hood, clear safety goggles, and a white N95-style face mask. Only their eyes and forehead are visible through the mask and goggles. The person has light skin and blue eyes. The background is a blurred, neutral-toned wall.


I'VE GOT TO ADD  
MEDICINE TO THE BOWL  
EVERY HOUR.

AND THEY JUST  
LET YOU WALTZ IN HERE  
WITH A FISH?




A person wearing a green full-body biohazard suit, including a hood and a white face mask. They are holding a clear glass fishbowl with both hands. Inside the fishbowl, a single orange and white clownfish is visible. The person's left leg has a biohazard symbol and the words "BIO DIVISION" printed vertically. The background is a simple, dimly lit room with a grey wall and a dark floor.

GOD NO.  
YOU KNOW HOW STRICT  
THEY ARE. MIKE HELPED ME  
SNEAK HER IN THE BACK  
BEFORE HIS SHIFT.

The back of a person wearing a green full-body biohazard suit, including a hood. They are standing and looking towards the left. The suit has a biohazard symbol and the words "BIO DIVISION" printed vertically on the left leg. The background is a simple, dimly lit room with a grey wall and a dark floor.

RIGHT... MIKE. JUST BE  
CAREFUL. LAST THING WE  
NEED IS DR. HOST NOTICING  
YOU'VE TURNED HIS LAB  
INTO AN AQUARIUM.



A person wearing a green hazmat suit, hood, and goggles is holding a round glass fishbowl. Inside the fishbowl is a single orange and white clownfish. The person is standing in a dimly lit room with a blurred background. Another person in a similar green suit is visible in the background, slightly out of focus. The scene is set on a dark, reflective surface.

THERE YOU GO, PATRICIA.  
ALL SETTLED IN. YOU'LL FEEL  
BETTER IN NO TIME.


SO WE'RE SUPPOSED TO BE  
BABYSITTING DR. HOST'S PROJECT...  
AND INSTEAD, WE'RE BABYSITTING  
YOUR FISH?



SHE'S FAMILY, JOHN.  
NOT JUST A FISH. BESIDES, DR. HOST  
WON'T NOTICE. THE SECURITY SYSTEM'S  
DOWN, REMEMBER? NO CAMERAS.







YEAH, BUT IF YOU GET CAUGHT...  
I'M NOT COVERING FOR YOU. YOU  
KNOW HOW STRICT THEY ARE SINCE  
'THE INCIDENT'.


OH, COME ON. I'M NOT  
GETTING CAUGHT. IT'S SO LATE -  
ALL THE BIG WIGS HAVE GONE  
HOME BY NOW.



SO... WHAT  
EXACTLY ARE WE BABYSITTING  
HERE?







THIS. IT'S A PROTOTYPE  
ACCELERATION LASER. CAPABLE  
OF PUSHING PARTICLES TO  
FASTER-THAN-LIGHT SPEEDS.



A person wearing a green full-body hazmat suit with a hood is standing in profile, looking at a small blue mechanical device on a dark table. The device has a cylindrical body with a lens, a small antenna, and a handle. A large, rectangular, metallic-looking lamp hangs above the table, casting light on the scene. The background is a plain, light-colored wall.

MIGHT TAKE A  
CLOSER LOOK... I MEAN,  
IT'S JUST US HERE.





UH, JOHN... DR. HOST  
PROBABLY WOULDN'T  
APPRECIATE THAT.





RELAX, WILL. IT'S  
NOT LIKE I'M GOING TO SET IT  
OFF OR ANYTHING...

PLUS, IT WOULDN'T  
HAVE A HUGE EFFECT ON  
99.993% OF MATTER IT  
TOUCHED



A close-up shot of a blue medical device, possibly a dental handpiece, being held by a hand in a green surgical glove. The device has a blue handle with a trigger, a blue body with a clear window showing internal components, and a blue nozzle at the end. A speech bubble is positioned above the device.

...BESIDES, WHAT'S  
THE WORST THAT COULD  
HAPPEN?





JOHN,  
JUST PUT IT DOWN  
BEFORE-



WOAH!

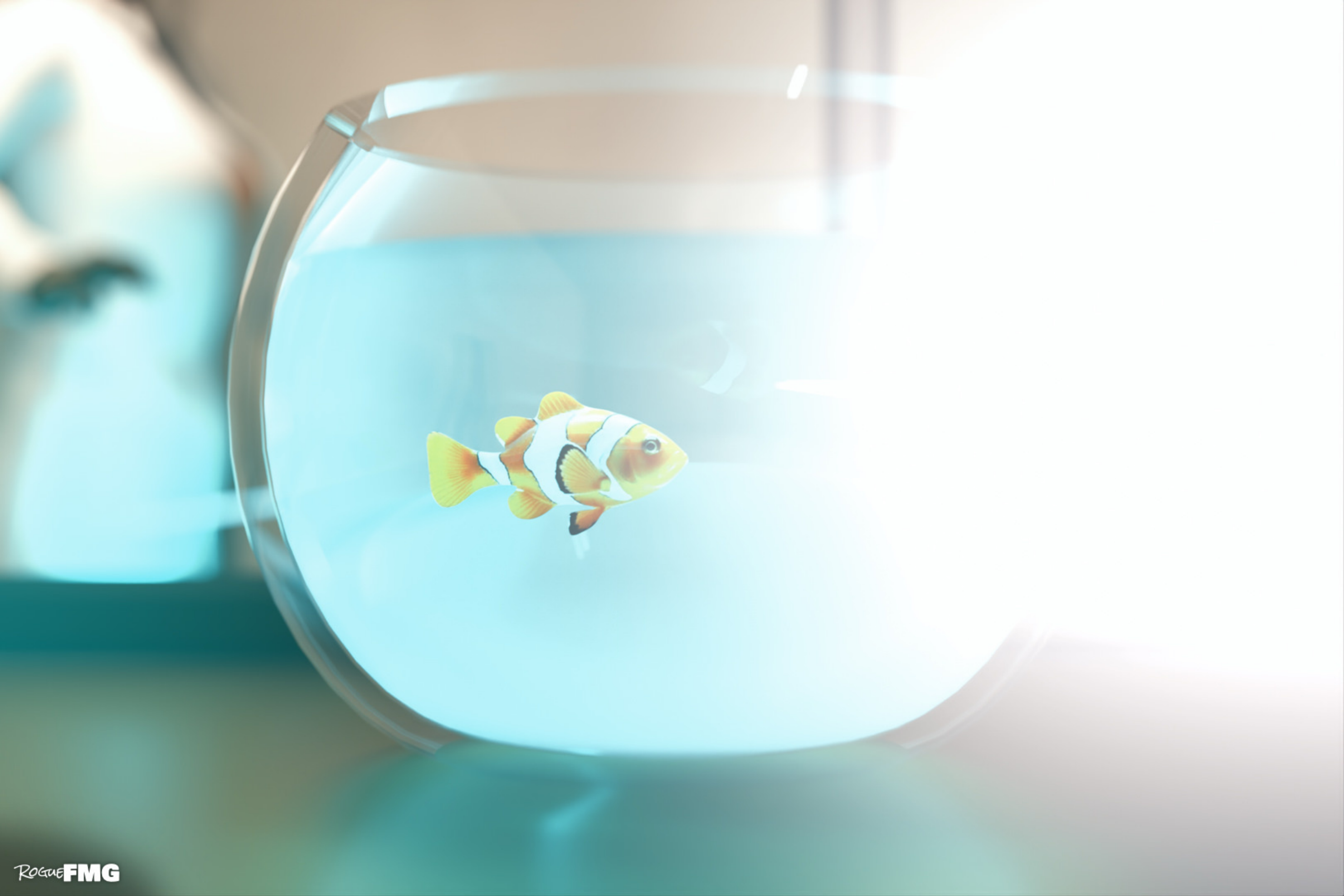


*PATRICIA!*


*OOPS*









A woman with dark hair tied back, wearing a white lab coat over an orange top and dark pants, stands in a room with large windows. She is looking out the window with a concerned expression. Outside, a clownfish is visible in a small, round glass bowl on a ledge. A bright blue energy beam originates from the bowl and extends across the floor. In the background, a large blue wheel-like object is visible through the window. A speech bubble above her head contains the text "WHAT THE HELL WAS THAT?".

WHAT THE HELL  
WAS THAT?



NO, NO, NO!  
PLEASE BE OKAY...





I THINK I'LL JUST... PUT  
THIS DOWN NOW.





OH, THANK JEBUS,  
YOU'RE OKAY. I'M SO  
SORRY, GIRL...






A woman with dark hair, wearing a white lab coat over an orange top and dark pants, stands in a hallway. She is looking towards the left. The hallway has a large window on the left and a red wall on the right. A speech bubble is positioned above her head.

THIS PLACE...  
IT'S REALLY GOING TO  
TAKE SOME GETTING  
USED TO.





I THOUGHT THAT  
LASER HIT ME AT FIRST...  
BUT IT MUST HAVE JUST  
MISSED OR SOMETHING.

I'M SO  
TIRED...





OH, RIGHT... I  
FORGOT ABOUT THE SECURITY  
CHECKPOINT.

I HEAR THEY'VE  
BEEN BEEN REALLY STRICT  
SINCE 'THE INCIDENT'.





I KNOW IT INVOLVED AMY, BUT  
NO ONE EVER TALKS ABOUT  
WHAT REALLY HAPPENED\*...

\* BUT LUCKY FOR US, YOU CAN READ ALL ABOUT  
IT IN THE COMIC FEMMAX GREEN DISCOVERY



HOLD IT RIGHT  
THERE. PREPARE FOR  
YOUR EXIT SEARCH.






DING, DING, DING.  
SHIFT CHANGE, BOYS!







WE'LL TAKE IT FROM  
HERE. GET YOURSELVES  
ON BREAK, GUYS.



A close-up photograph of a person wearing a bright blue protective suit with the hood pulled up over their head. They are wearing clear safety goggles and a white surgical-style face mask that covers the lower half of their face. Only their eyes and eyebrows are visible through the mask and goggles. The person has light-colored eyes and dark hair. The background is a plain, light-colored wall.


HOLY SHIT...  
MAYA? YOU STARTED ON MY  
LAST SHIFT! YOU MUST HAVE  
BEEN HERE OVER TWELVE  
HOURS!



A close-up shot of a woman with dark hair pulled back, wearing a white button-down shirt. She has a nose ring and is looking slightly to her left with a slight smile. The background is blurred, showing what appears to be a modern office or lab setting with some greenery.

OH, MIKE? HARD TO  
TELL YOU GUYS APART. YEAH...  
BEEN TRYING TO HELP DR. FITZPATRICK  
MAKE A BREAKTHROUGH... NO LUCK  
YET THOUGH.





GO ON THROUGH. YOU  
LOOK EXHAUSTED - NO NEED  
FOR THE FULL CHECK TODAY.  
GET SOME REST.



ALWAYS BENDING THE  
RULES FOR THE ONES YOU  
LIKE, HUH?

CAN YOU BLAME  
ME? SHE'S SUPER  
CUTE.





YOU USED TO SAY THAT  
ABOUT DR. FITZPATRICK.

OH, I STILL THINK SHE'S  
CUTE. SHE'S JUST A LITTLE  
MORE INTIMIDAING NOW.

LAB  
SECURITY

LAB  
SECURITY




A woman with dark hair, wearing a white lab coat over an orange top and dark jeans, is walking towards the camera in a futuristic, metallic corridor. The corridor has blue lights and a person in a blue suit is visible in the background. A speech bubble is above her head.

THAT WAS  
SWEET OF HIM.



WHAT A DAY...  
FEELS LIKE I'VE BEEN  
HERE FOREVER.



A woman with dark hair in a ponytail, wearing an orange tank top and blue jeans, stands in a locker room. She is looking down at a white shirt hanging on a rack. The background shows blue lockers and a wooden bench.

I CAN'T WAIT TO  
CRASH INTO MY BIG,  
COMFY BED...



A close-up shot of a woman with dark hair and a nose ring, looking slightly off-camera with a questioning expression. She is wearing an orange tank top. The background is a dark blue space with bright, out-of-focus white light sources, creating a bokeh effect. A speech bubble is positioned near her head.

HMM?  
WHAT'S THAT...





SOMETHING  
SHINY...



A woman with dark hair tied back, wearing an orange ribbed tank top and blue jeans, stands in a locker room. She is looking down at a small, glowing green object she is holding in her right hand. The background consists of blue lockers with white numbers. A speech bubble is positioned above her head, containing the text "OH MY GOD, I COMPLETELY FORGOT...".


OH MY GOD,  
I COMPLETELY  
FORGOT...





SECURITY WOULD'VE TORN  
ME APART FOR HAVING THIS...  
THANK GOD FOR MIKE...



A close-up shot of a person's hand holding a small, irregularly shaped rock. The rock is dark grey or black with bright green and blue glowing veins and patches. The background is a blurred blue and white, suggesting an indoor setting with light coming from a window.

I'LL HAVE TO SNEAK  
IT BACK SOMEHOW TOMORROW. BUT  
TONIGHT... BETTER KEEP IT SAFE.

TO BE CONTINUED